

SyncFolder Mobile Sync

Mobile Sync Overview

The **Mobile Sync** feature allows you to synchronize files between the Windows app and an Android device running the **SyncFolder** app. Since the connection uses **Wi-Fi**, there's no need for a USB cable, which can often be unreliable.

How It Works

To use Mobile Sync, the SyncFolder app on your Android device must be set up to run its built-in **File Server**. This server:

- **Encrypts all data** using SSL/TLS for secure transfers.
- **Restricts access** to only the directories you configure.
- **Requires authentication** with a name and password for additional security.

Once the File Server is running, your Windows app can connect to it and sync files securely over Wi-Fi.

Mobile Device Requirements

Mobile Sync is only available on **Android devices**. Due to iOS folder access restrictions, an iOS version of the app would offer very limited functionality because most folders cannot be selected for sync or copy on iOS.

Installing the Android SyncFolder App

Install the **SyncFolder** app from the Google Play Store. [Find it [here](#)]



Important Note

There are currently **two apps** named SyncFolder in the Play Store:

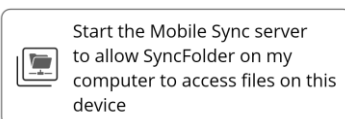
- **SyncFolder** – *supports Mobile Sync (use this one)*
- **SyncFolder Photos** – *older version, does not support Mobile Sync and will be removed in the future*

Configuring the Android SyncFolder app for Mobile Sync

The first time you launch the app, it will request permission to access **photos, media, and files** on your device. You must allow this for the app to function properly.

Next:

1. On the **Home** page, tap the **Start Mobile Sync Server** button.



2. A pop-up will prompt you to create a **username** and **password**. These credentials provide an additional layer of security on top of SSL/TLS encryption.
3. The Windows app will need to use this username and password to connect to the Mobile Sync server.

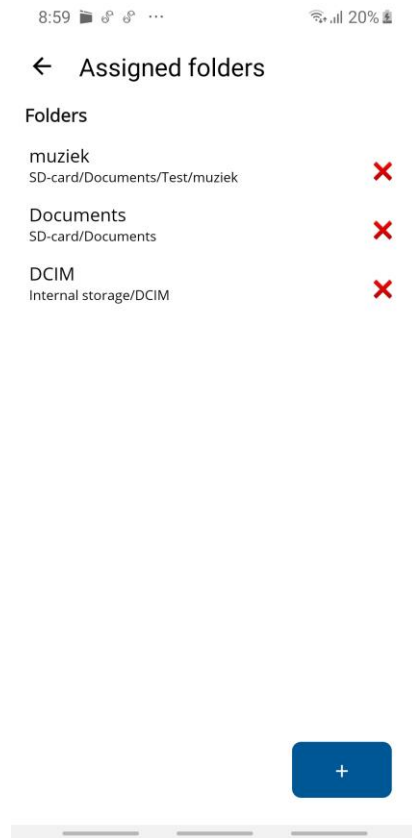
Configuring Accessible Folders

Before starting the server, you must choose which folders on your device will be accessible from the Windows SyncFolder app.

To configure folders:

1. Tap the **FOLDERS** button in the top-right corner to open the **Assigned Folders** page.
2. Tap the **+** button at the bottom of the page.
3. Use the standard Android **Folder Picker** to select a folder.
4. Once selected, the folder will appear in the **Assigned Folders** list.
5. Repeat the process to add more folders if needed.

You can then go back to the **Server** page.



Running the Mobile Sync server

On the **Server** page, tap **Start Server**. This will activate the Mobile Sync server.

Once the server is running:

- Any tasks configured in the Windows SyncFolder app for Mobile Sync can upload or download files from your device.
- For details on setting up these tasks, see the next chapter: **Configuring Mobile Sync Tasks**.

Note: Allowing the App to Run in the Background

For Mobile Sync to work while you switch to other apps or turn off the screen, the SyncFolder app must remain active in the background.

To ensure this:

- **Do not close the app** manually while syncing.

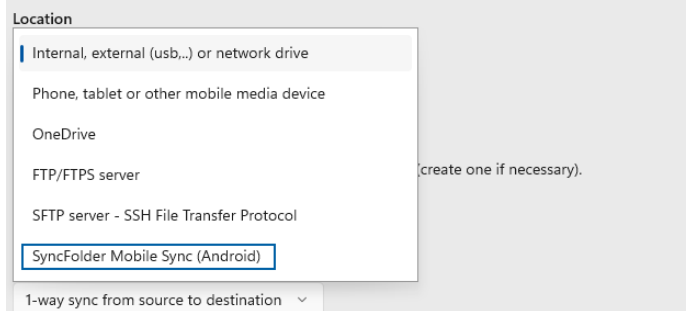
August 22, 2025

- Check your device's **battery optimization settings** and **disable optimization** for the SyncFolder app. This prevents Android from stopping the app when it's in the background.
- Some devices may require you to **allow background activity** or **keep the app running when the screen is off** in the app's settings.

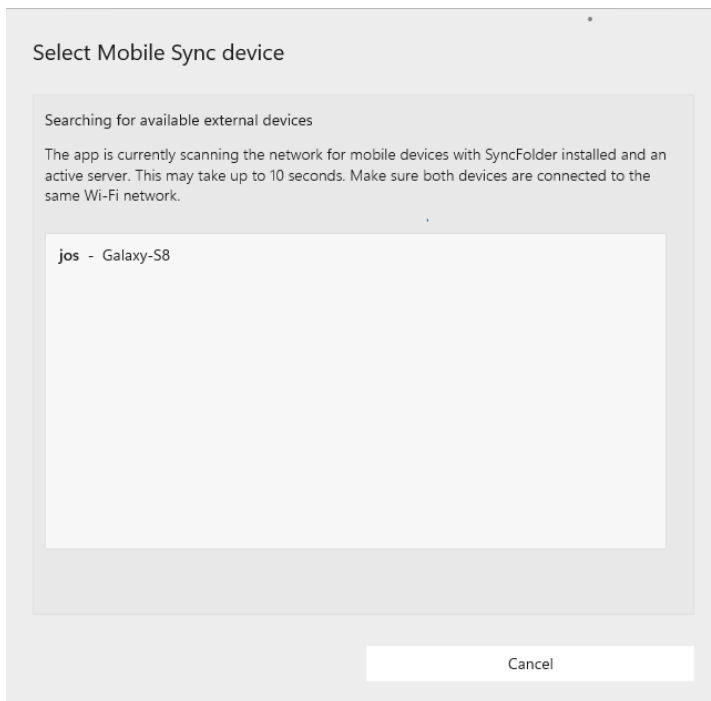
Configuring Mobile Sync Tasks in the Windows SyncFolder app

To indicate that the task must access the Mobile Sync server on the mobile device select **SyncFolder Mobile Sync (Android)** for the **Location** type for your source and/or destination folder.

Choose the destination drive/folder where the copy should be saved



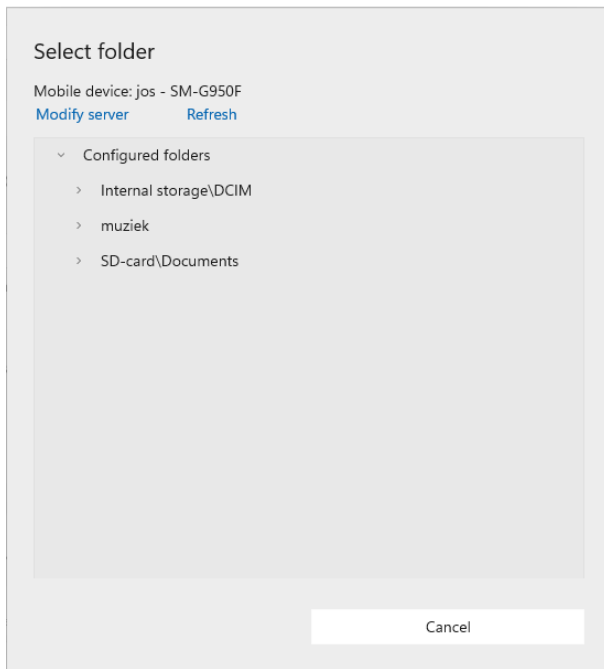
This opens a popup window where the app searches the local Wi-Fi network for devices supporting **Mobile Sync**. It can take 10 seconds and longer before your mobile device appears in the list of detected devices.



Select the device and then enter the username and password that you have configured in the Android app. Click the **Connect** button in the popup.

The popup then changes into a **Select folder** popup that shows the device name and a folder tree with **Configured folders** as root folder. Expand this folder to see the folders that you have configured in the Android SyncFolder app.

Select the folder that you want to assign to the task.



Finally, save the task.

Running a task configured for Mobile Sync

Executing a Mobile Sync task works the same as any other type of task. You can execute the task manually or automatically in the background.

Restrictions

When configuring Mobile Sync as source location it is not possible to automatically execute the task when one or more files on the device change.